



# OUT OF THIS WORLD

HAROLD ARLEN  
JOHNNY MERCER

**(A)**

Chords for Section A:  
Staff 1: Bbm/Eb, Ebm7, Eb7, Ebm7  
Staff 2: Bbm/Eb, Ebm7, Eb7sus, Eb7  
Staff 3: Ebm7, Ebm6, Abm7, Ab7  
Staff 4: Eb6, E0, Fm7, Bb7#5  
Staff 5: Bbm/Eb, Ebm7, Eb7, Ebm7  
Staff 6: Bbm/Eb, Ebm7, Eb7sus, Eb7  
Staff 7: Ebm7, Ebm6, Abm7, Ab7  
Staff 8: Eb6, E0, Fm7, Bb7  
Staff 9: Eb6, Ab7, G7



# OUT OF THIS WORLD p2

**C** Cm<sup>6</sup>



Cm<sup>6</sup>

C<sup>o</sup>

Ab<sup>7</sup>(#11)

G<sup>7</sup>

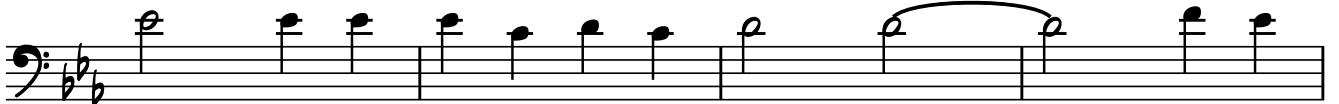


Cm<sup>6</sup>

Cm<sup>b6</sup>

Cm<sup>6</sup>

Ab<sup>7</sup>



Cm<sup>6</sup>

Ab<sup>7</sup>

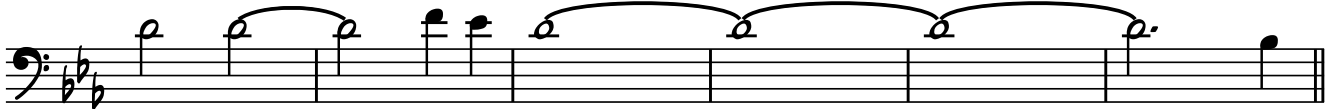
G<sup>7</sup>

G<sup>7</sup>

C<sup>7</sup>

F<sup>7</sup>

Bb<sup>7</sup>



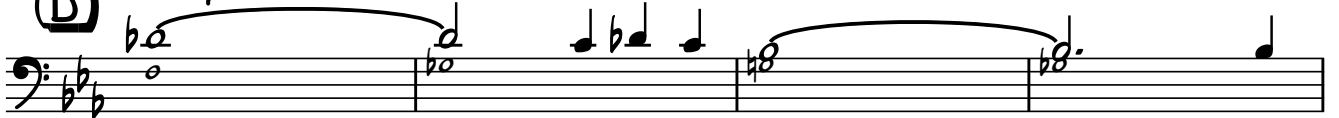
**D**

Bbm / Eb

Ebm<sup>7</sup>

Eb<sup>7</sup>

Ebm<sup>7</sup>

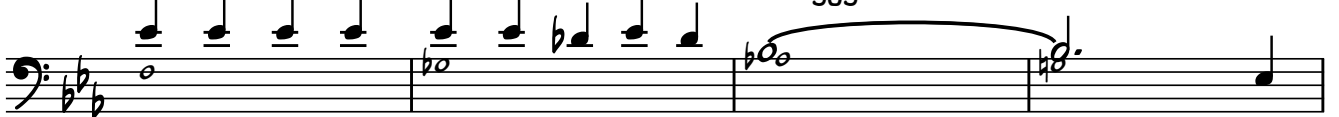


Bbm / Eb

Ebm<sup>7</sup>

Eb<sup>7</sup><sub>SUS</sub>

Eb<sup>7</sup>



Ebm<sup>7</sup>

Ebm<sup>6</sup>

Abm<sup>7</sup>

Ab<sup>7</sup>



Eb<sup>6</sup>

E<sup>o</sup>

Fm<sup>7</sup>

Bb<sup>7</sup>



Eb<sup>6</sup>

( Bb<sup>7</sup>#5 )

